

Asian Hornet

Alert!

Report sightings of this species to:
alertnonnative@ceh.ac.uk

Species Description

Scientific name: *Vespa velutina*

AKA: Yellow-legged Hornet

Native to: Asia

Habitat: Nests usually high in trees and man made structures, sometimes closer to the ground; hunts honey bees, other insects and also feeds on fruit and flowers.

Not easily confused with any other species. Dark brown or black velvety body. Characteristically dark abdomen and yellow tipped legs. Smaller than the native European Hornet.

Introduced to France in 2004 where it has spread rapidly. In 2016 the first UK sighting was confirmed in Gloucestershire. High possibility of introduction through, for example, soil associated with imported plants, cut flowers, fruit, garden items (furniture, plant pots), freight containers, or in/on untreated timber. The possibility that it could fly across the Channel has not been ruled out.

A highly aggressive predator of native insects. Poses a significant threat to honey bees and other pollinators.

Do not disturb an active nest. Members of the public who suspect they have found an Asian Hornet should send a photo to alertnonnative@ceh.ac.uk.



Key ID Features

Asian Hornet Queen

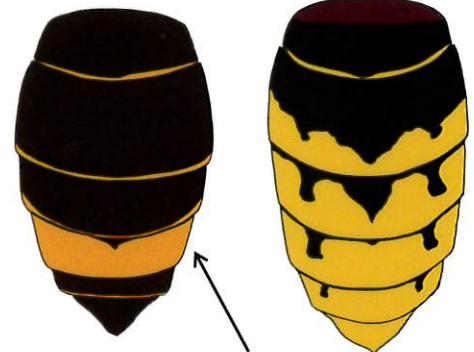
Queens up to 30 mm; workers up to 25 mm long

Entirely dark brown or black velvety body, bordered with a fine yellow band

Legs brown with characteristic yellow ends

Asian Hornet

European Hornet



Asian Hornet abdomen is almost entirely dark except for 4th abdominal segment.



Asian hornet "hawking" for honey bee prey

Similar Species

Asian hornet (*Vespa velutina*) for comparison

- Queen up to 30mm long, worker up to 25mm long
- Legs yellow at the ends
- Dark brown / black abdomen with a yellow / orange band on 4th segment
- Head dark from above, orange from front
- Dark coloured antennae
- Entirely black velvety thorax
- Never active at night

Actual size



Q. Rome

European hornet (*Vespa crabro*)

- Queen up to 35mm long, worker up to 30mm long
- Legs brown at the ends
- Yellow abdomen marked with brown on the upper part, not banded
- Head yellow from above, yellow from front
- Yellow antennae
- Thorax black with extensive brown markings
- May be active at night

Actual size



Roger Burgess

Mia Tonge, National Bee Unit

Giant woodwasp (*Urocerus gigas*)

- Larger than Asian hornet, female up to 45mm long
- Legs yellow
- Distinctive yellow and black banded abdomen
- Long cylindrical body unlike Asian hornet which has an obvious waist
- Long yellow antennae
- Female has an obvious long sting-like appendage (ovipositor) which it uses to lay eggs in trees

Actual size

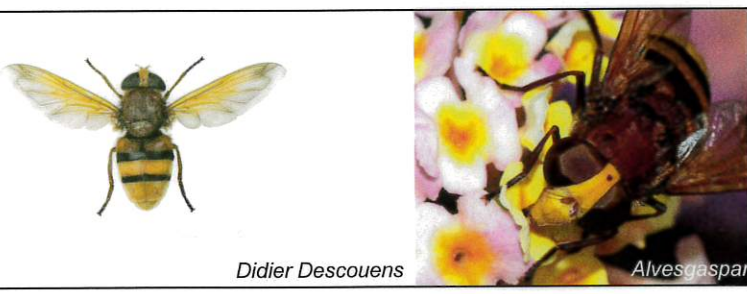


Q. Rome

Hornet mimic hoverfly (*Volucella zonaria*)

- Abdomen has more yellow stripes than Asian hornet
- Legs darker than Asian hornets
- Only one pair of wings (hornets and wasps have two pairs)
- Large, globular eyes

Actual size



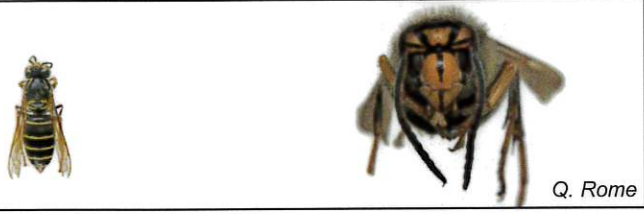
Didier Descouens

Alvesgaspar

Median wasp (*Dolichovespula media*)

- More extensive yellow and orange colouration on abdominal segments than Asian hornet
- Yellow markings on thorax unlike Asian hornet

Actual size



Q. Rome

Field Signs

Active April-November (peak August/September). Mated queens over winter singly or in groups, in various natural and man-made harbourages – underneath tree bark in cavities left by beetle larvae, in soil, on ceramic plant pots – potentially any small, well-insulated refuge. Makes very large nests in tall trees in urban and rural areas, but avoids pure stands of conifers. Will use man made structures (garages, sheds etc.) as nesting sites.



For more information visit:
www.nonnativespecies.org
www.nationalbeeunit.com

Alert!

Report sightings of this species to:
alertnonnative@ceh.ac.uk